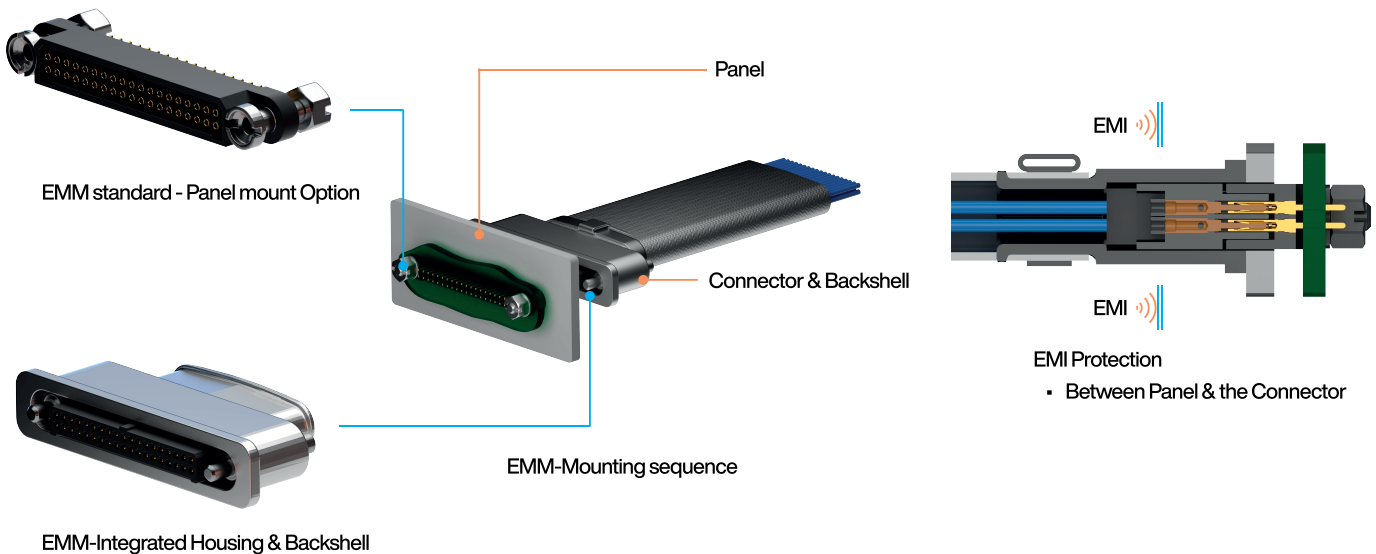




EMM
PANEL
BACKSHELL
BY NICOMATIC

TECHNICAL NOTE

To convert your 1.27mm pitch EMM solution in a miniature robust and 360° shielded panel mount solution. EMM Panel Backshell acts as an EMI Metallic Protection cover from panel to metallic braid over the EMM couple:



Available configurations

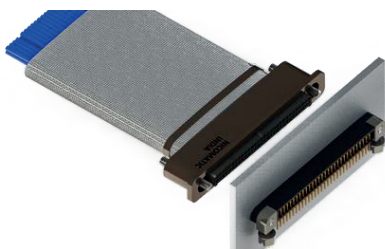
Panel Side:

- Male or female
- From 4 to 60 contacts
- Signal contacts
- Straight on PCB (Through or SMT)
- Straight on cables

Backshell Side:

- Male or female
- From 14 to 60 contacts (contact us for less)
- Signal contacts
- Straight on cables

Options on request



←
90° on PCB



←
Reinforced EMI O-Ring

Advantages

- Compact and lightweight Panel Solution
- 360° shielding from panel to metallic braid
- Reduced conductivity breaks
- Ruggedized

Overall dimensions

nn LF contacts number	Distance in mm between axes		Length
	B	D	
04	Please contact us for more details		
06			
08			
10			
12			
14	14.62	24.37	
16	15.89	25.64	
18	17.16	26.91	
20	18.43	28.18	
22	19.7	29.45	
24	20.97	30.72	
26	22.24	31.99	
28	23.51	33.26	
30	24.78	34.53	
32	26.05	35.8	
34	27.32	37.07	
36	28.59	38.34	
38	29.86	39.61	
40	31.13	40.88	
42	32.4	42.15	
44	33.67	43.42	
46	34.94	44.69	
48	36.21	45.96	
50	37.48	47.23	
52	38.75	48.5	
54	40.02	49.77	
56	41.29	51.04	
58	42.56	52.31	
60	43.83	53.58	

Performances

Tested as per
MIL-DTL-83513

Part numbering & codification

Please consult our
2D datasheets

Panel thickness in mm	Depth (N) in mm
2.0	10.55
1.5	11.05
1.0	11.55
0.5	12.05

